

# Theme:

# Fall (Leaves)

# Week 2

This document contains all of the activities for the theme Fall (Leaves) “for the age group “Big Kids.”

Have fun!

Questions or comments? Please email us at

[playconnecttoday@gmail.com!](mailto:playconnecttoday@gmail.com)

All activities require adult supervision!

By downloading this PDF, you agree to Play Connect L.L.C's Terms and Conditions and privacy policy.

\*Clip art images taken from: <https://publicdomainvectors.org> and <https://clipartsearch.freebusinessapps.net/>

\*Images used from: unspash.com

# Book Suggestion

(We highly recommend checking your local library for this book, however if you cannot find it-please see link on our “Theme extras” web page to purchase if desired or find another book that showcase fall (leaves)! -We suggest using the same book for two weeks as this really helps children gain reading comprehension of the book! \*\*You do not need to read the entire story all at once. Some children have a difficult time concentrating for an entire story, it is totally okay to portion on the story over a few reading sessions!



# Song Suggestion:

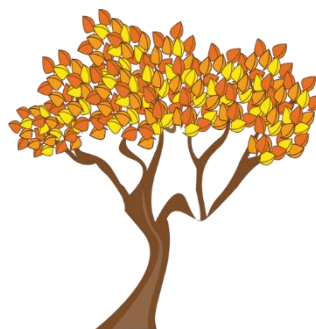
## All the leaves are falling down

(Sung to the tune of "London Bridge is Falling Down")

*Written by Play Connect LLC*

All the leaves are falling down  
Falling down, falling down  
All the leaves are falling down  
Red, yellow, orange and brown

Rake them up into a pile  
Into a pile, into a pile  
Rake them up into a pile  
Then jump in, it will make you smile!





# Simple Vocabulary Words

These are optional vocabulary cards to show your child before reading the story to help with understanding. It is also a great idea to point out the words while reading the book!



**WIND**



**KITE**



**FALL**



**LEAVES**



**PINECONE**



**PUMPKIN**



**RAKE**



**ACORN**

# Art Project: Leaf Stamping

## What you need for this activity:

- \*Leaves from various trees
- \*Non-toxic Paint
- \*Paintbrushes
- \*Construction Paper (white works best for this)
- \*Coloring Utensil

## Directions:

- \*For this activity your child(ren) will use leaves as stamps to create a fall image.
- \*To begin, gather leaves with your child, it will work best if the leaves are not super crunchy (or they will break too easily).
- \*Next, in the middle of the construction paper, write “Happy Fall” (if your child is able to trace the letters then write them in dashed print).
- \*Then ask your child(ren) to choose a leaf and paint it on ONE side. They may choose to use one of more colors.
- \*Finally, FIRMLY press the leaf down on the paper around the words. Keep doing this until the page has multiple fall leaves on it!

# Fine Motor Activity: Leaves Scissor Skills

## What you need for this activity:

- \*Child-safe scissors
- \*Leaves Scissor Skills page

## Directions:

\*For this activity, your child will focus on their scissor skills.

They will cut on straight lines: vertical and horizontal. We practice these types of lines first as they are easiest for children to cut and allow them to get used to not only using their scissors but using them with a clear purpose.

\*Cut on the lines in the pages below.

# Fall Leaves Scissor Skills

Can you cut on the lines to reach the  
Falling leaves?







# Math Activity: Leaf Measurement

## What you need for this activity:

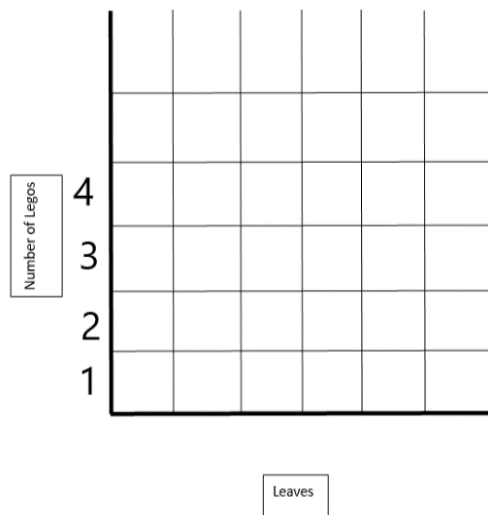
- \*Leaves
- \*Legos
- \*Chalk (optional)

## Directions:

This activity will let act as an introduction to measurement for your child.

\*To begin (if you want to – not need to) make a graph using the chalk. If you do not have this option, you could also create one on paper.

It should look something like this:



Then, ask your child(ren) to go and pick out leaves to measure. If you are doing this activity with multiple children, you can encourage them to try and find the biggest leaf.

Then they may measure their leaves using the Legos (top to bottom) and (if desired), use the chart to mark down what they measure. They should put the actual leaves down at the bottom.

They can then fill in that many cells on the graph using the chalk. So, if the leaf is 3 Legos high, they fill in 3 cells and so on.

To extend the activity, at the end, you can ask which leaf is the biggest/smallest. You could also ask your child(ren) to put the leaves in order from smallest to biggest.

# Language Activity:

## Fall Rebus Reading


### What you need for this activity:

- \*Fall Rebus Story
- \*Something for you to write with (optional)

### Directions:

\*For this activity your child(ren) will practice their vocabulary while also “reading” a fall story. This is a great way for them to get engaged with a story and build their comprehension skills.


\*Read the story below with your child(ren). When they see a picture, they should “read” that portion. For example


“You can watch  “ You will read “you can watch” and they say “leaves.”

\*Optionally, if your child(ren) enjoy creating stories, they can create their own fall story. Then, you could also type it up (inserting pictures where appropriate) and they could practice reading it themselves. Often stories children create on their own resonate with them more.



# FALL STORY

You can do a lot of things in the fall with your family and friends! You can watch 

fall from the  ! Then you can

 the  into a pile. You can go and

pick a  . At the  patch you might

even see a  burying an  for the

winter! The Fall is a great time of year!

# Science Activity:

## Why do leaves fall?

### What you need for this activity:

- \*Outdoors by trees
- \*Optional: paper and pencil and/or dry erase board with markers
- \*Optional: chalk

### Directions:

\*For this science activity your child(ren) will learn about why leaves fall off of the trees.

\*To begin, if possible, take your child(ren) for a walk. While you are walking, examine the trees. Are there still leaves on all of them? Are there leaves on the ground? What colors do the leaves have (if you did the experiment last week, you can remind them why/how the leaves change colors).

\*Ask them why they think the leaves don't stay on the tree all year long.

\*\*At this point you could write down their ideas

\*Then pick up a leaf from the ground, and ask your child to *really* observe it and tell you what they see. Do they notice the stem? The veins in the leaf?

\*Ask what they think the veins do. \*\*The simple answer is that the veins carry water that the tree has sucked up through its roots into the leaves. The leaves then use that water to make "food" for the tree – again the veins transport it so the tree can "eat."

**\*\*\*Now if you would like to do an example activity of the next portion:**

### **Option 1 (a bit more complex)**

\*Take some ribbon and attach it to a piece of paper (preferably in the shape of a leaf but this is not absolutely necessary).

\*Ask your child to (or you can as well) make a tiny cut in the ribbon (not all the way through yet). Then another cut and another until finally you have cut it all the way. What happens? The leaf falls to the ground!

\*When it starts getting cold outside the leaves know that their time is near, as temperatures drop, tiny ridges are made at the stem of each leaf (the part that connects it to the tree). These little ridges act like the scissors you used to make the connection less and less strong between the leaf and the tree. Eventually the tree pushes them off.

So why can't trees keep their leaves all year round? In the cold winter months, trees know they won't have enough water to keep their leaves and themselves alive so they let them go. If they did not do this, the tree itself would not survive the winter.

### **Option 2**

Draw a large circle (that can fit all of the people participating) with some chalk.

Ask one person to stand in the middle of the circle (they represent the tree)

Everyone else begins by standing close to the "tree."

The tree says "oh it's getting colder." Everyone surrounding the tree takes a small step back. Keep repeating this until someone steps out of the circle. Then "My leaves are falling!" Continue until all of the leaves have "fallen."

Explain that as it gets colder the leaves slowly break their connection to the tree. Once they have broken it completely, they fall down! Trees need their leaves to fall so that they can keep as many nutrients (tree food) as possible so they can make it when it gets really cold out!

