

# Theme: Fall (Leaves) Week 1

This document contains all of the activities for the theme Fall (Leaves) “for the age group “Big Kids.”

Have fun!

Questions or comments? Please email us at

[playconnecttoday@gmail.com!](mailto:playconnecttoday@gmail.com)

All activities require adult supervision!

By downloading this PDF, you agree to Play Connect L.L.C’s Terms and Conditions and privacy policy.

\*Clip art images taken from: <https://publicdomainvectors.org> and <https://clipartsearch.freebusinessapps.net/>

\*Images used from: unspash.com

# Book Suggestion

(We highly recommend checking your local library for this book, however if you cannot find it-please see link on our “Theme extras” web page to purchase if desired or find another book that showcase fall (leaves)! -We suggest using the same book for two weeks as this really helps children gain reading comprehension of the book! \*\*You do not need to read the entire story all at once. Some children have a difficult time concentrating for an entire story, it is totally okay to portion on the story over a few reading sessions!



# Song Suggestion:

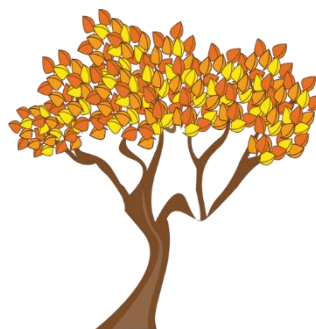
## All the leaves are falling down

(Sung to the tune of "London Bridge is Falling Down")

*Written by Play Connect LLC*

All the leaves are falling down  
Falling down, falling down  
All the leaves are falling down  
Red, yellow, orange and brown

Rake them up into a pile  
Into a pile, into a pile  
Rake them up into a pile  
Then jump in, it will make you smile!



# Simple Vocabulary Words

These are optional vocabulary cards to show your child before reading the story to help with understanding. It is also a great idea to point out the words while reading the book!



**WIND**



**KITE**



**FALL**



**LEAVES**



**PINECONE**



**PUMPKIN**



**RAKE**



**ACORN**

# Art Project:

## Fall Tree

### What you need for this activity:

- \*Blank Tree Outline (option 1)
- \*Sticks (Option 2)
- \*Non-toxic Squeeze Glue (Option 2)
- \*Red, Orange, Yellow, Brown Non-toxic Paint

### Directions:

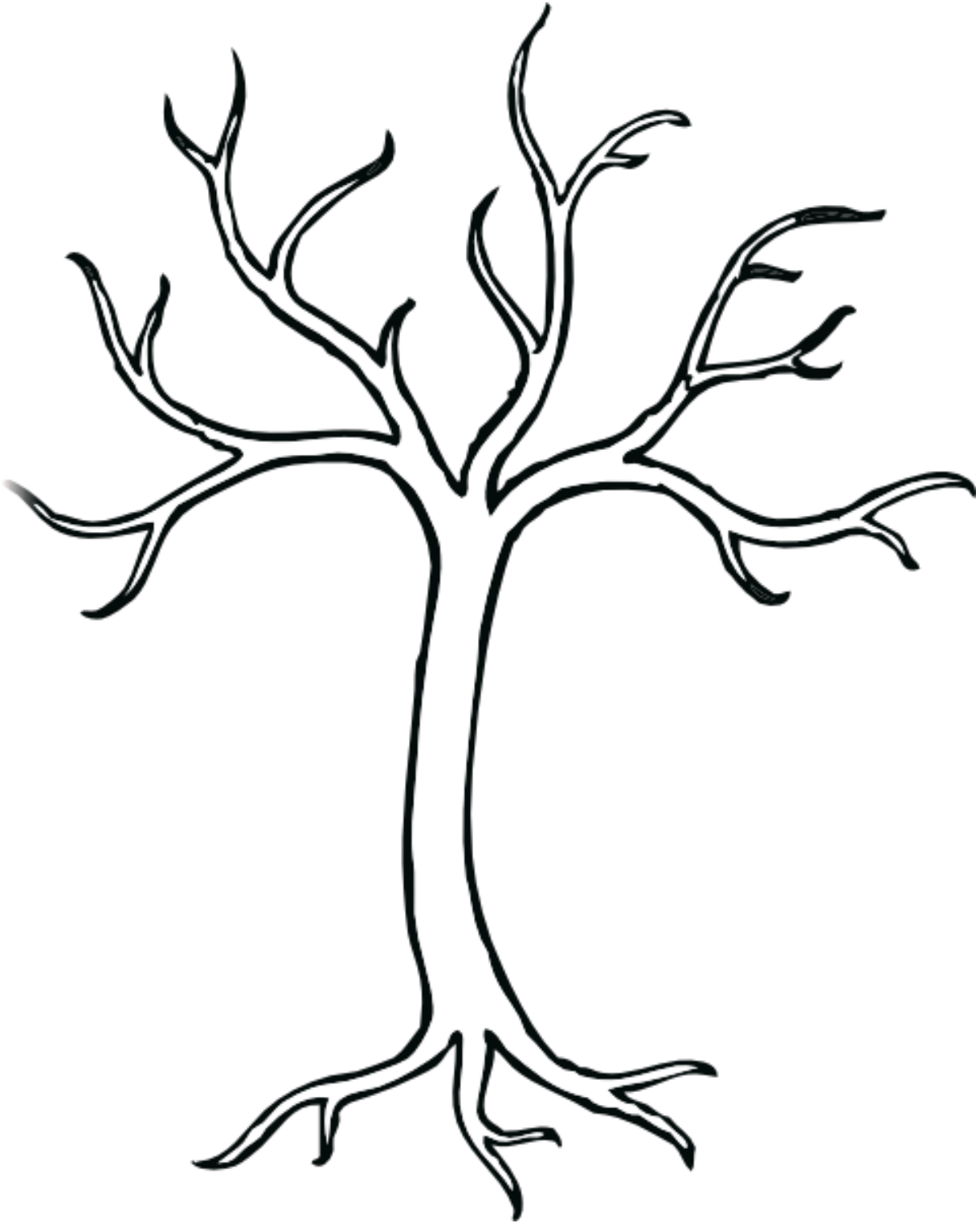
\*For this activity your child will create a fall tree using their fingerprints!

Option 1:

- \*Print off the blank tree outline. Ask your child to paint the tree brown.
- \*Then ask your child(ren) to dip their fingers in the various paint colors to make prints (leaves) all around the tree. Your child may also choose to put prints at the bottom of the tree to represent leaves. \*\*If they do not like getting paint on their hands, they could also use a cotton swab.

Option 2:

- \*Gather some sticks and glue them onto a piece of paper in the form of a tree.
- \*Once dry ask your child(ren) to dip their fingers in the various paint colors to make prints (leaves) all around the tree. Your child may also choose to put prints at the bottom of the tree to represent leaves. \*\*If they do not like getting paint on their hands, they could also use a cotton swab.



# Pre-writing Activity:

## Leaf rubbings

### What you need for this activity:

- \*Leaves
- \*Parchment paper
- \*Pencil or colored pencil
- \*Marker
- \*Tape

### Directions:

\*This activity will allow your child to practice their pre-writing skills, tracing straight lines in particular, a vital line-type in learning how to properly form letters.

\*To begin, gather some leaves. Then place them under the paper. We recommend taping the paper down after this so that it does not move around on them.

\*Then, ask your child(ren) to turn their pencil to the side and *lightly* rub it across where the leaves are. (If they have it pointed straight down like you would normally write, this will not work as well).

\*Lastly, ask them to trace the lines (veins in leaf) with the marker.





# Math Activity:

## Leaves on trees

### What you need for this activity:

#### **Option 1 (preferred)**

\*Outside! (a not windy day)

\*Sticks

\*Leaves

\*Chalk

#### **Option 2**

Leaves on trees page

Red, orange, yellow markers

### Directions:

For this activity, your child will work on recognizing numbers and their associated quantities.

#### **Option 1: Outside (non-windy day!)**

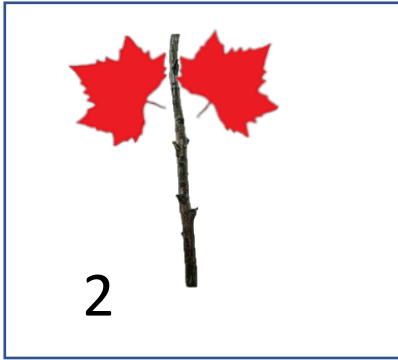
\*To begin: gather a bunch of sticks and leaves with your child(ren)

\*Draw some squares on the pavement using the sidewalk chalk.

\*Inside of each square, write a number. Which numbers you write is up to you – go based off of what your child knows and then push one number higher. (For example, if your child recognizes numbers 1 and 2, write numbers 1, 2, AND 3 so they are pushed to learn this as well).

\*Once you have written each number, place a stick inside of each square (to represent the tree)

\*Then ask your child to take leaves and place the number of leaves on the tree as are written inside of each box.



**Option 2:**

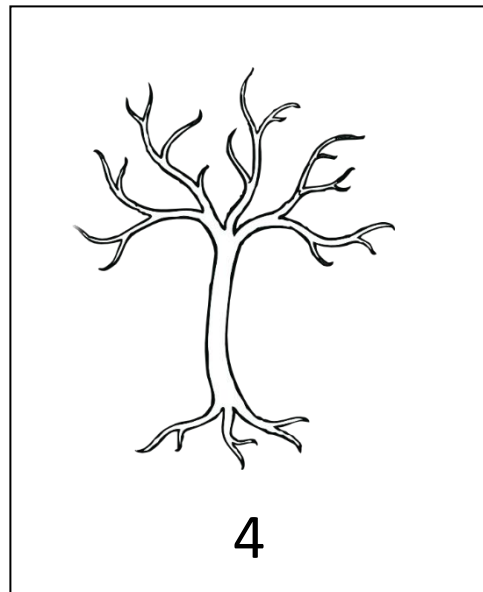
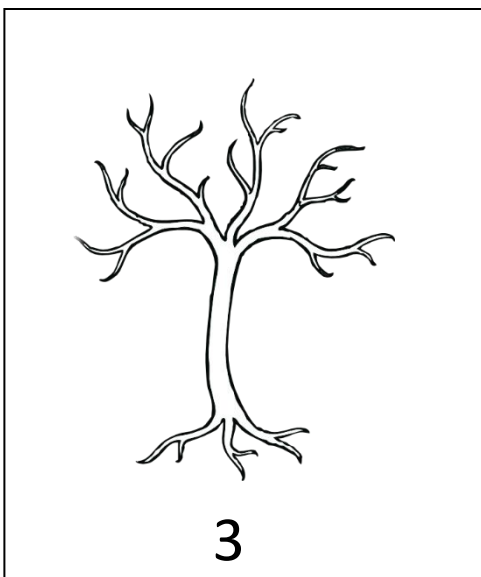
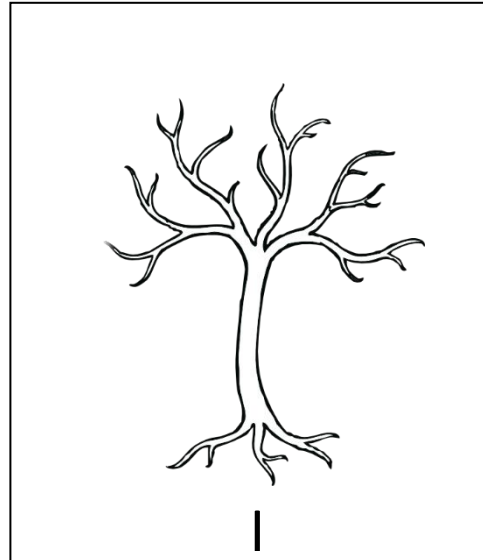
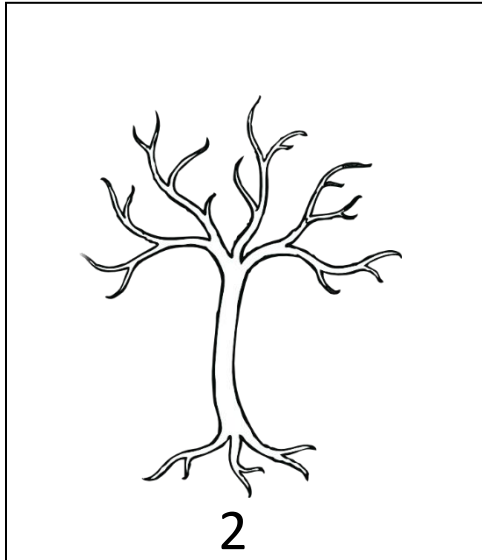
Complete the leaves on trees page

# Leaves on Trees

Look at the boxes containing trees below.

Each box contains a number

Use your marker and draw as many leaves on each tree as are shown in the box!



# Language Activity:

## My Leaf Book

### What you need for this activity:

- \*Construction paper
- \*Stapler
- \*Non-toxic squeeze glue
- \*Writing Utensil
- \*Leaf ID Page

### Directions:

- \*For this activity your child(ren) will create a leaf book.
- \*To begin, cut each sheet of construction paper in half.
- \*On the top page, write: "MY LEAF BOOK" (either write in dashed letters so your child can trace OR if they know how to write their letters already, show them an example of how to write the words and have them copy).
- \*Then, staple all of the pieces together.
- \*Next, go on a leaf walk! Bring with the Leaf ID page and pick up leaves.
- \*Finally, glue the leaves onto the pages and write the names of each leaf. (Again, either dashes or by example)

# Fall Leaf Identification Chart

Here are some fall leaves, can you find more?!



MAPLE



ELM



OAK



BIRCH



SASSAFRAS



PINE

# Science Activity: (lengthy)

## Changing Leaf Colors

### What you need for this activity:

- \*A leaf that is still green (but will change color) such as Maple or Birch
- \*Rubbing alcohol (ADULT USE ONLY)
- \*Hot water (ADULT USE ONLY)
- \*Glass jar (careful use)
- \*Separate container (big enough for the glass jar)
- \*A strip of a white coffee filter
- \*\*Optional: leaf experiment observation sheet (see below)

### Directions:

\*For this science activity your child(ren) will learn about why leaves change colors.

\*\*This activity will require plenty of adult supervision!

\*To begin: Gather some leaves (from the same tree) with your children). The leaves should be from a tree whose leaves change colors such as a maple BUT the leaves you gather must still be green.

\*Then: Ask your child(ren) to rip up the leaves into small pieces and place them in the jar.

#### ADULT TIME

\*Pour rubbing alcohol into the jar until it reaches the halfway point.

\*Mash up the leaves using a spoon- REALLY mash them

- \*Pour hot water into the separate container and place the jar inside it, standing up
- \*Let it sit for an hour
- \*Come back and check the jar. Ask your child(ren) what they observe.
- \*Then: place the strip of coffee filter into the jar – leaving it in overnight if possible.
- \*There should be new colors on the filter! (They may be very light)

Why does this happen? The leaves contain something called chlorophyll (basically plant food). As the season changes and it gets colder outside, the chlorophyll starts to break down. This allows the colors that have always been inside of the leaf to show through!

## The science of leaves changing colors!

1. At the beginning of our experiment, our leaves looked like this:  
(draw image of leaf – or print photograph)

Our leaf is a \_\_\_\_\_

2. Then we crushed up our leaves in a jar and added rubbing alcohol. We put the jar in hot water and waited! It looked like this:

3. Here is what it looked like during:



4. We placed a strip of a coffee filter and this is what happened:

We learned that the reason leaves change color in the fall is that the chlorophyll breaks down as it gets colder. This allows the colors (that have been there all along) to show through! We can see them on the coffee filter!